

SKINNY PANTS



KIDS

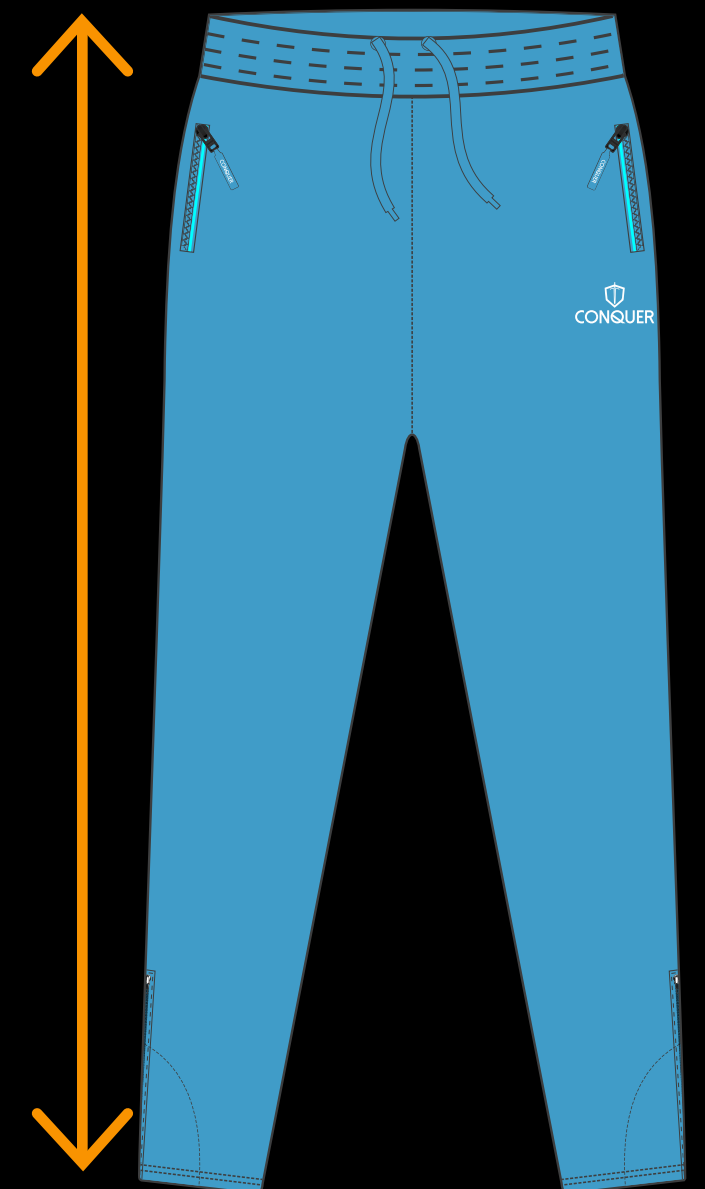
Measurements represent actual size of the garment

| SIZE | SIDE LENGTH | WAIST | AGE <small>*Guideline only, please double check measurements</small> |
|------|-------------|-------|---|
| 3XSY | 58cm | 23cm | 3-4yrs |
| 2XSY | 62cm | 24cm | 4-5yrs |
| XSY | 66cm | 26cm | 5-6yrs |
| SY | 70cm | 28cm | 6-7yrs |
| MY | 78cm | 30cm | 8-9yrs |
| LY | 83cm | 32cm | 9-10yrs |
| XLY | 90cm | 34cm | 10-11yrs |

SIDE LENGTH

Measure garment on a flat surface, measure from the top of the waist band to the edge of the garment leg.

**No need for body measurements.*



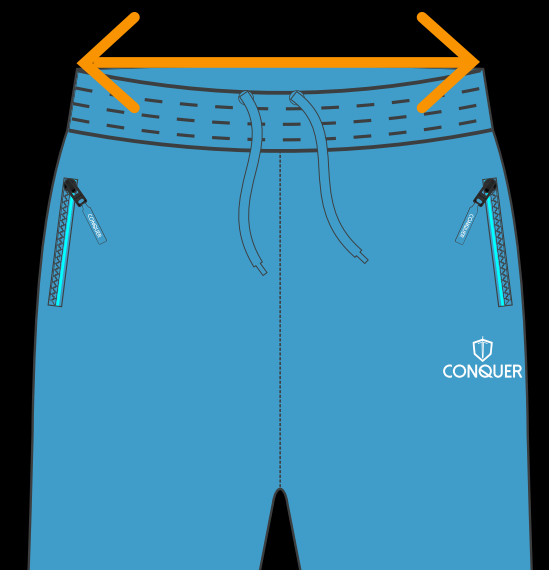
AGE GUIDE

We advise you to use the garment measurements to help you choose the correct size, the ages displayed are a rough guide.

WAIST

Measure garment on a flat surface. Only the front of waist measurement is needed.

**No need for body measurements.*



#PREPAREDFORGLORY